



Red Cedar Lakes Association Spring 2020 Newsletter

RCLA Board 2019–2020

President / Officer / Nature Committee Chairperson

Valerie Bausch 651-308-2242
vbausc@yahoo.com

Vice President / Officer

Gerry Johnson 715-410-5341
geraldjj@centurytel.net

Secretary / Officer

Rose Kopras 651-491-6648
lakwism@gmail.com

Treasurer / Officer

John Page 651-208-2379
john.page.rcl@gmail.com

Aquatic Invasive Species (AIS)

Committee Chairperson

Tom Goodwin 612-868-4857
tlgfin1@gmail.com

Coupon Book Committee Chairperson

Runae Maloney 612-597-2906
runaed@skcable.com

Fish Habitat Committee Chairperson

Dan Ellefson 913-484-4733
dan.e@stievencapital.com

Lake Information & Safety

Committee Chairperson

Len Christianson 612-247-9771
lenc@centurytel.net

Membership Committee Chairperson

Sue Sleik 712-790-1278
jonsleik@centurytel.net

Communications Committee Chairperson

Ryan Linder 651-246-5247
linder.j.ryan@gmail.com

Shoreline & Island Restoration

Committee Chairperson

Michael Klutho 612-875-8014
mklutho2801@gmail.com

Water Quality Committee Chairperson

Tim Lewis 651-962-6741
oldtobylewis@gmail.com

VISIT US AT redcedarlakes.com

President's Letter

First, I hope this newsletter finds everyone safe and healthy! Most years I start off the article with a "hallelujah", we made it through another winter and we are ready to start all our RCLA summer activities ... who would have thought we would be dealing with a pandemic? There is no doubt that COVID-19 will impact what the association will be able to accomplish this summer, however, it certainly does not mean that all activities are cancelled. Please take the time to read each committee report in the newsletter as they will clearly outline what activities will continue, what activities will just need to be postponed and what activities will need to be cancelled. You will be thoroughly impressed on what these 9 committees are doing in order to keep our lakes some of the best in Wisconsin. The board is aware of the Barron and Washburn travel guidelines and will be conducting our monthly board meetings virtual until further notice. Key committees are also in contact with the WI DNR to ensure all safety measures are adhered to during these unprecedented times.

There are a couple of topics that are important and I would like to ask for help from our members:

1. Please continue to support the Red Cedar Lakes Association through membership dues and purchasing of the coupon book. As you recall in last years Annual Meeting, we talked about the value and importance of ensuring we have enough funds available so that when we are faced with a significant issue on our lakes, we can react quickly. Please take the time to encourage neighbors that may not be a current member to join ... the value far outweigh the small annual fee of \$20/ person. The 2020 coupon books are out and have new coupon savings ... supporting our local community as soon as possible will be important to our economy as well as benefit the RCLA.
2. Volunteering is still needed and important to accomplishing our goals each committee has set forth in 2020. As stated before, Volunteering is easy, Volunteering is fun, Volunteering is rewarding and **ALL SKILLS ARE WELCOME!!** If you are interested in volunteering for any committee, please either contact the Committee Chair or myself at vbausc@yahoo.com . **A special THANK YOU to those that have volunteered throughout the years ... your time and dedication is greatly appreciated!!.**

I'm sure a number of you are wondering about the RCLA Annual Meeting, normally held on the second Sat. in July. At this time, we have decided to postpone the meeting until either August or September (date TBD) due to

current large gathering restrictions. As per our policy, we will be sending out a postcard to all members 30 days in advance of the meeting with all the details and we will also post updates to our website and Facebook page.

Red Cedar Lakes Association Mission

“To preserve, Protect and Improve Red Cedar, Balsam, Hemlock, Bass and Mud lakes, their watershed and ecosystem”

Valerie Bausch

President

Vice President's Letter

Since moving to the VP role in 2018, I have been focusing my efforts on longer term strategies aimed at maintaining and improving the water quality of our lakes. The Board felt this was a gap in our overall management plan because the committee reports/projects you'll read about elsewhere in this newsletter are more annually tactical in scope. I have been working on three initiatives, with one recently completed and two on-going.

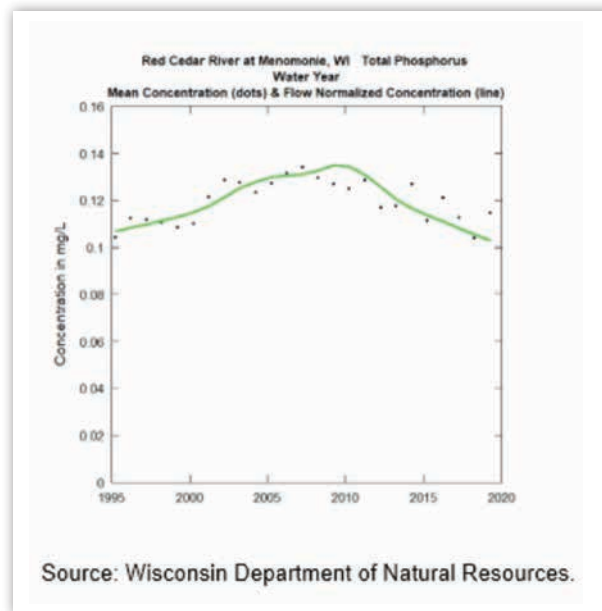
RED CEDAR WATERSHED WATER QUALITY PARTNERSHIP

I represent RCLA on this Committee, which is made up of individuals representing the WI DNR, UW-Extension, Barron, Sawyer & Dunn County land and water conservation coordinators, municipalities, lake associations and more. Our EPA and DNR approved and funded Comprehensive Plan's key strategy is to improve water quality in the entire watershed by reducing the phosphorous loading by 65% over 10 years.

In last spring's article, I covered many of the key long term programs underway to meet or exceed this goal and the results thus far. Therefore I am not going to address these again this spring. However, I will say we are ahead of schedule at the half-way point or year five. (see phosphorous results chart)

In addition to the above effort, in 2019 a Wisconsin bipartisan Water Quality Task Force was created by Assembly Speaker Robin Vos, R-Rochester to expand conservation efforts, update state laws and regulations and improve education. The Task Force, led by Representatives Katrina Shankland, D-Stevens Point and Todd Novak, R-Dodgeville, held 14 hearings and received input from over 70 Stakeholder Groups throughout the State.

The Red Cedar Watershed Partnership was one of the Stakeholder Groups providing input in Menomonie



last December. Ultimately, the Task Force issued 13 recommendations in January. We reviewed these recommendations with an eye toward how they would affect our work and issues in our watershed. The Partnership was mostly in favor of the recommendations and advised the Task Force accordingly.

In January, the State Assembly approved a \$10 million package for 13 bipartisan bills aimed at addressing statewide concerns on water quality. The bills would create a state water policy office, expand the number of conservation employees, increase dollars for grants to address waters listed on the DNR's impaired waters list, increase grant funding for landowners with contaminated wells, create strategies for nitrates and provide more grant funding for farmers to implement phosphorous reduction best management practice. Our watershed will reap the benefits of many of these bills, if approved by the Senate and Gov. Tony Evers this spring.

RCLA PARTNERSHIP WITH LANDMARK CONSERVANCY

We continue our effort to partner with Landmark Conservancy to explore potential opportunities to implement land conservation trusts with landowners who own undeveloped lots. The objective is to reduce residential and commercial development, which has many benefits including reduction of phosphorous loading and improvement in water quality.

Landmark is a non-profit organization that partners with lake associations, WI DNR, communities and individuals who are interested in preserving land for conservation purposes. Jointly, we have identified 19 lots representing approximately 4,500 total acres and 12,000 lake frontage feet on Balsam Lake and the channel leading into Balsam that are undeveloped at this time.

Landmark did a comprehensive mailing in spring, 2019 to these landowners containing information on conservation trusts and the benefits to the landowners of implementing



such trusts. Unfortunately, no communication was received back from these landowners. Another round of contact and communication is scheduled to be sent out in May this year with the hope of securing some landowner interest. According to Landmark, successful conversion of private property to land trust are less than 5% due to the complexities associated with land values, family wills and development financial windfalls. However, we will still attempt to pursue such opportunities.

BIG CHETAC AND BIRCH LAKES ASSOCIATION (BCABLA) STAKEHOLDER COMMITTEE

The objective of this committee was to provide input and guidance to the BCABLA Board on the development of a five-year Comprehensive Management Plan. I was a participant on this committee, representing RCLA and the Red Cedar Watershed Water Quality Partnership Committee. The key portion of the plan deals with eight goals and subsequent action items covering AIS management, water quality, fisheries, shoreline habitat and more.

Following a series of public input meetings, the plan was submitted to the DNR for review last fall. Following some revisions, the DNR approved the plan in April. You can view the plan on the BCABLA website. BCABLA now has the responsibility to lead the implementation of the plan, and the Stakeholder Committee has been officially dissolved.

GERRY JOHNSON
Vice President

Aquatic Invasive Species (AIS) Committee

It's hard to believe that in a few short weeks it will be fishing opener. Winter showed back up last night with a few inches of snow and predicted temps in the teens and low 20's for the next few days. But as we know, things change quickly and spring will emerge to bring on fishing and great times at the lake.

Let us start by recapping the work that was done by the AIS Committee in 2019.

During 2019, volunteers contributed their personal time at the lake to assist us in boat and landing monitoring, purple

loosestrife control, AIS plant and animal monitoring on the lake, and ongoing AIS education efforts. These volunteer hours are recognized a rate of \$12 per hour for the RCLA in providing funding to support our Wisconsin DNR grant. The total dollars credited to us for these volunteer efforts in 2019 equaled \$6,123.72.

Thank you to all volunteers who put in hours during 2019!

New 5 year Aquatic Plant Management Plan:

Early this spring we received approval for a new Aquatic Management Plan from the WI DNR. This plan is an

extensive document that outlines the basis on how we intend to manage our lakes for the next five years. We are required by the WI DNR to have an approved plan in place to continue to be eligible for grant funding.

A copy of this new Aquatic Plant Management plan can be found on the RCLA website.

2020 Clean Boats Clean Waters (CBCW) Grant:

RCLA again received a new WI DNR grant to facilitate the ongoing monitoring of our four busiest landings through the upcoming summer. These landings include; Waldo Carlson Park, Hwy 48 & V landing, Loch Lomond Beach Club, and the Hemlock Lake landing.

This coming summer we will be partnering with the Rice Lake Boy Scouts, several local individuals and our lake consultant – LEAPS to monitor our landings.

Due to the COVID-19 virus situation the WI DNR has directed that all CBCW landing monitoring be delayed until June 1st. This is subject to change depending on how the virus situation progresses.

Once we receive the approval to begin our landing monitoring efforts we will be educating boaters on aquatic plants/animals - both native and invasive, proper bait handling, proper bilge, live well and bait tank water handling, power loading of boats, etc.. This program continues to be extremely important to ensure we do everything we can to maintain the health of our lakes.

We have been working with Barron County and the Loch Lomond Beach Club to have decontamination sites installed at the Waldo Carlson and Beach Club landings. Further information regarding these decontamination sites can be found later in the newsletter.

We are always looking for additional help in monitoring our boat landings. The CBCW monitoring program is very straight forward and easy to do. It's a great way to get outdoors, help protect our lakes and make some extra money. You must be at least 16 years old. If you are interested in becoming a landing monitor please contact Brett Heinlein.

CLP Herbicide Treatment:

We are in the second year of our latest AIS control grant.

Again, this year we will be treating medium and heavy density Curly Leaf Pondweed (CLP) beds in our lakes. We recently received approval of the 2020 herbicide treatment permits. These permits will allow us to treat up to 50 acres of CLP in Balsam, Red Cedar and Hemlock lakes. Copies of the approved permits are available for viewing on the RCLA website.

The treatment plan is very dynamic. Each year we perform a pre-treatment on-lake study to determine where CLP should be treated. Dependent on spring conditions, we make a decision as to which areas will be treated.

An example of this is what happened last year. The spring of 2019 we found less evidence of CLP growth. For this reason we scaled back the intended treatment areas to focus on only those areas where we saw considerable CLP growth. Each spring is different and this is the reason for the pre-treatment study.

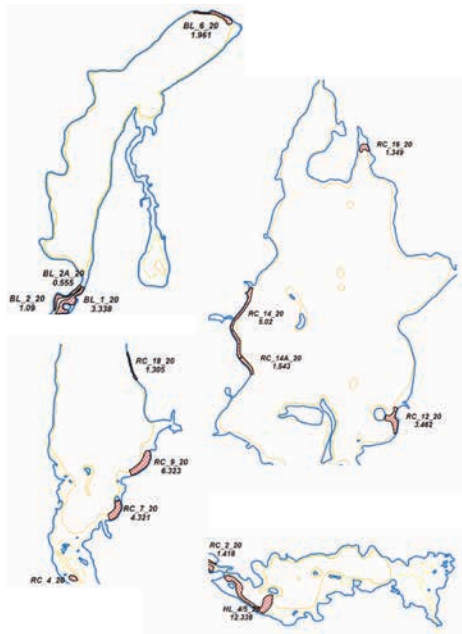
CLP herbicide treatment is done as early in the spring (after ice out) as possible. CLP is the first aquatic plant to emerge. We treat early to ensure we do as little harm to our native lake plants as possible. Most of the native plants have not yet emerged at the time we apply the herbicide treatment. The herbicide disperses quickly and has little impact on normal native plant growth.

We will also be performing a post treatment study to determine the effectiveness of the treatment and to ensure there were no unintended effects. Both the pre and post treatment studies will be performed by LEAPS (our lake management consultant).

I've provided a map below of the intended treatment areas. Please note, this may change depending on the actual conditions this spring.

Each year we complete a survey of Curly Leaf Pondweed beds on our lakes. Every 5th year this is done by a professional service. For the upcoming year this will be done by RCLA volunteers with the assistance of our lake consultant - LEAPS.

The purpose is to create an annual record of the CLP present in our lakes. It helps us have consistent data and understand if CLP is expanding or contracting over time.



If you are interested in helping out with project please let us know. It's actually very fun. We go out over about 2 1/2 days, cruise the lake looking for and mapping via GPS the various CLP beds. Information collected is location and approximate bed density. There are typically four of us out on a pontoon boat and it can make for a great couple days.

Shoreline Habitat Study:

This year we will continue conducting a parcel level study of our lake's shoreline. This summer we will be focusing on Balsam and Mud lakes. Last summer we completed the shoreline study for Red Cedar Lake. Results of this study are being compiled and should be available later this summer.

The purpose of this study is to determine the health of the 30 miles of shoreline of our lakes. The results of the study will give us insight whether water quality improvements could be achieved through better shoreline management. Once a particular lake study is complete a shoreline owner may request the analysis for their particular property. This will provide them with valuable information as to what steps they can take to help improve the health of their own shore line. Please note, only the shoreline property owner will have access to their specific property information. The RCLA is undertaking this project to provide a key resource to its members and to allow us to better understand factors that impact the quality of our lakes.

We will need volunteers to help with this project. It a great way to get out on the water and help out the Association by donating your time.

Purple Loosestrife Monitoring:

We will be continuing this project again this year. Unfortunately, due to the "Safer at Home" guidelines we will not be raising beetles for release this year.

During July and August our volunteers we be out on the lake locating and eliminating purple loosestrife where it is found. These efforts go a long way to helping ensure our infested areas remain under control and do not spread.

The Nature Committee is taking the lead on this project and would love for you to join them as part of the committee to help with this and other projects.

Ongoing Monitoring of AIS:

Throughout the summer there is ongoing monitoring for AIS within our lakes. This includes placing Zebra Mussel plates on all our lakes and monitoring them on an ongoing basis. We also throw rakes to check for potential new AIS that may have invaded our lakes.

This work is very important as the earlier we determine if we have experienced a new AIS in our lakes the faster we can respond.

With the discovery of zebra mussels and eurasian milfoil in nearby lakes we need to be diligent to ensure that we protect and monitor our lakes.

Bass Lake Studies:

This coming summer with the help of our lake consultant - LEAPS we will complete an Aquatic Native Plant study on Bass Lake.

Bass Lake is a very important lake as it has a consistent high success rate for producing new loon chicks. This year, one day after the ice out, we again have a pair of loons on the lake. Nearly every year this lake sees one to two loon chicks survive to migrate at the end of the summer. This is a very high production rate and it is important for us to understand and monitor the health of Bass lake.

Conclusions:

We have a multitude of projects that will be completed this coming summer. These projects are being undertaken to ensure we gain a better understanding of the various influences on our lakes. Some involve ongoing monitoring projects to help ensure we have good data and alert us if we face a newly introduced AIS into our lakes. The CLP treatment project is a large undertaking to help reduce/eliminate an aquatic plant that has a known detrimental impact on our water quality.

Lake Information & Safety Committee

Oh buoy! It's spring. And it's buoy time. Yes, they're going in. One of my areas of responsibility is the buoys we see on our lake chain. As a reminder to all of us, please adhere to the signage on the buoys for the protection of NO WAKE ZONES, and known areas of shallow water that can both disrupt

wildlife habitat and cause boat damage. Financial support of the buoy program comes from the funds raised by the RCLA. I can tell you this, when I first got involved in the buoy program it was back breaking work. They are heavy, stuck in the mud, slime coated and just hard to handle. Presently we contract with Red Cedar

Services who, with the use of a small crane mounted on a specially equipped pontoon boat have made the job a lot easier. When first installed every spring, until the weights that hold the buoys in place become lodged in the mud,



Fish Habitat Committee

The Fish Habitat Committee did not meet its winter objective of installing fish sticks on Balsam Lake. Currently, we are preparing a permit application with the Wisconsin DNR to install on open water in late June. Timing may be impacted by public health directives related to the COVID-19 virus, but we

We are always looking for volunteers to help us with these efforts. If you have an interest in getting involved please reach to either of us. We will be happy to meet with you and get you up to speed.

Be safe and enjoy the lake this boating and fishing season!

Tom Goodwin & Brett Heinlein
AIS Committee Co-Chairs

a strong spring wind or storm can set them adrift. If you happen to notice a stray out there or one that is missing from where it should be, please call and let me know. Generally we can get right on it and locate it before it gets damaged.

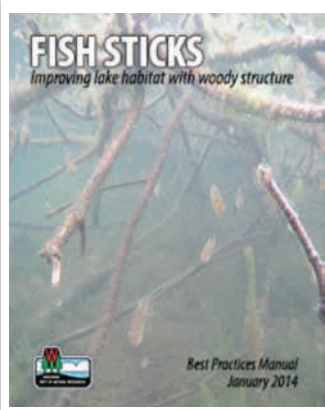
Boater safety for youth is also another area I work with. Unfortunately for the past three years we have not offered it due to the lack of an instructor to teach it and also having to compete with the online access. Right now with all practicing social distancing the online version is perhaps the better option. I went online and went through the course material and found it to be well put together and very helpful. Information on the requirements can be found on the Wisconsin DNR website, dnr.wi.gov. The actual course is provided by private vendors for a charge of approximately \$35.00. The one I looked at was boat-ed.com. There are others as well. And again, I was Impressed with the quality of the presentation.

Thanks again and have a safe boating season.

Len Christianson
Lake Information & Safety Committee

hope to be able to report that the project has been completed at this summer's annual meeting.

Looking further forward to additional fish sticks installations in the winter of 2021, we are targeting the north-central shore of Hemlock Lake. If you own



shoreline property in this area and are willing to consider granting permission to the Fish Habitat Committee to pursue new fish sticks projects, please contact Dan Ellefson at dmellefson@gmail.com.

Did you know that under certain conditions the

Wisconsin DNR exempts the requirement of a permit

for a tree drop in navigable waters if placed and maintained only by a riparian? A worksheet outlining each of these conditions is located on the following website: <https://dnr.wi.gov/topic/waterways/documents/permitExemptionChecklists/02D-treeDrop.pdf>. The Fish Habitat Committee would be pleased to serve as an information resource if you're a shoreline property owner interested in independently improving fish habitat by increasing the quantity of woody structures in our lakes.

Dan Ellefson
Fish Habitat Committee

Coupon Book Committee

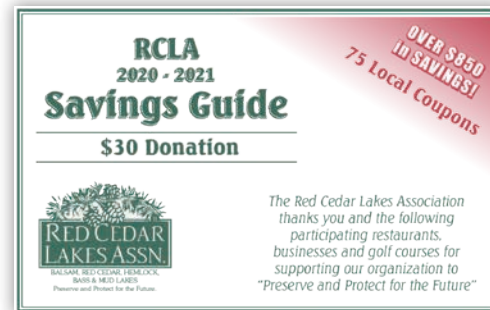
It has been such a fun winter working with all the wonderful business owners who support the RCLA. Not only have our past supporters continued their participation but we added 7 new businesses and 14 new coupons to this value-packed Savings Guide. It is truly amazing. We live and vacation in a great supportive community. Hopefully, you have received the 2020-2021 Savings Guide and have returned your donation. As you know, the donation helps support, along with the grants, the work that is being done to preserve the lakes in the jurisdiction of the RCLA. Last year the Savings Guide raised over \$8,000 towards this work. I am hoping, with your support this year, we can exceed that amount.

Additional Savings Guides will be available at Dairy State Bank in Birchwood. Please stop in and purchase one for guests to use while visiting, or maybe as a house warming gift for a new neighbor.

Thank you for all you do to support the RCLA. Have a wonderful summer – and please remember to buy local and to say 'thank you' to our supporting businesses.

If you have questions, did not receive your Savings Guide, or have businesses you would like to see in the Savings Guide, please let me know.

Runae Maloney
Coupon Committee Chairperson



Restaurants, Golf Courses & Businesses

Back 9 Campground	Grinder's (2)	Rice Lake Printery (2)
Boar's Edgewater Store (3)	Jason Market (2)	Rolling Oaks Golf Course (2)
Bear Tracks (2)	Lake Kids	Rustic Corner Cafe (2)
Birch Lakes Resort	Lehman's	Seasonal Power Toys (3)
Birchwood Cafe (2)	Mary's Blue Gill Bar (2)	Spider Lake Saloon (2)
Butternut Golf	Miller's Cheese House	Sunset View Golf
Butternut Hills - Marshall House	MTI Home Security	Tagalong Golf & Resort
Cedar Lake Grill (3)	My Last Resort - Cedar Lake Grill	The Birchwood Cafe (2)
Cheers (7)	Norske Nook Restaurant & Bakery	The Country Inn
Chil Chee Bar, Restaurant & Resort	Northwoods Country Store (2)	The Road (2)
Cousin's	Outdoor Ventures	Thomas Plantie
Cumberland Golf Club	Pine Ridge	Two Sisters
Don Johnson Motors (2)	Poppy Popcorn	Unique Design and Spa (2)
Ed's Pitstop (5)	Prop's On Long Lake	Wagon Wheel (2)
Gary's Grocery (2)	Red Cedar Country Store (2)	

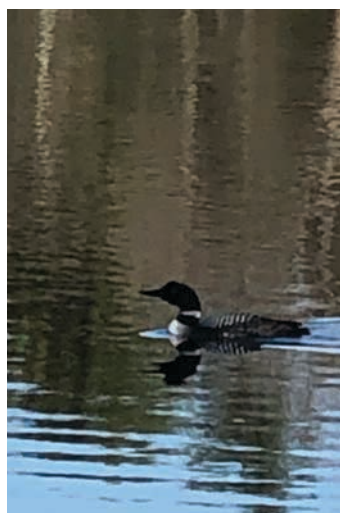
Nature Committee

What a difference a year makes with Mother Nature, last year "Ice Out" on Red Cedar was April 23 and this year it was April 8th ... wish means our Loons are also back a couple weeks earlier!!

Due to the COVID-19 challenge we are all facing, the Nature Committee made the decision to cancel the 2020 program, usually scheduled for the first Sat. in June. We seriously considered rescheduling it in the fall, but with so much uncertainty and our #1 priority to keep everyone safe, the right thing was to cancel. We plan to have our

Nature Program back in 2021 so please look for details in the RCLA Fall and 2021 Spring Newsletters. Although we are unable to conduct our Nature Program this year, we would like to encourage you to check out our friends and neighbors at Hunt Hill Audubon Sanctuary, where all their trails continue to be open. To check out their nature programs and everything they have to offer, go to www.hunthill.org

There are still plenty of important activities that the Nature Committee will be conducting this summer, aligning with any social distancing or other COVID-19 restrictions. The top priority will remain the continued participation in the Wisconsin's LoonWatch Program, which helps protect common loons and their aquatic habitats through education, monitoring, and research. We will also be participating in the Wisconsin Loon Population Survey on



July 18 from 5 a.m. – 10 a.m. This survey takes place every five years and only a select number of lakes are chosen, which is a true testament to the quality of our lakes as we always have a vast amount of loons and nests on our lakes. Other key activities for the Nature Committee will include expanding our “dark skies” program to educate residents on

reducing bright lights on our lakes, promoting the value

and importance of using lead-free tackle, monitoring the bald eagle nests, GPS mapping the wild rice beds, and partnering with the AIS committee to monitor and eradicate Purple Loosestrife.

Nature Committee Spring Fun Facts: Did you know that as of 2016, Wisconsin had over 11,000 otters?! Here are a few more fun facts about otters:

1. Otters are the largest species of the weasel family measuring in at 3-4 feet long, 44-82 lbs and have a 12-18 inch tail.
2. Otters are able to stay underwater for up to four minutes and dive to depths of more than 40ft.
3. They have 2-4 pups born in April-May, gestation for one year, after one year of age they go out on their own to find their own territories.
4. Life Expectancy is 10-15 years old in the wild.
5. Main predators include: humans, bald eagles, bears, and coyotes.
6. Otters mainly reside in the northern portion of Wisconsin, but some can be found in other parts of the state.

The Nature Committee currently has 9 active members that help promote our vision and make the Red Cedar Lakes a safe refuge for wildlife. If you are interested in joining this great committee or attending our next meeting to learn more about our 2020 activities, please contact chair Valerie Bausch at vbausc@yahoo.com.

Valerie Bausch
Nature Committee

Special Thank you to our Corporate Sponsors.
Your support of RCLA is greatly appreciated.



Communications Committee

As I write this it is great to see an ice free lake and the trees starting to pop.

From a communications standpoint in 2020 our focus will be to improve upon what we already have established by adding features and more content.

The first improvement will be to the website. Throughout 2019 we added a fair amount of lake reports, AIS surveys, permits, the fall newsletter, etc. We post those types of documents to educate all members and hopefully keep everyone “in the know” but did not have a way to notify or show on the website when something new had been added. To improve upon this we will be adding a “What’s New” feature to our home page. We are working on what will be the best method for displaying that currently and hopefully will be working in the next couple month. The other feature that is further out due to the complexity is adding an area to pay association dues or donate on the website. We are in the infancy of researching that feature as well as discussing at the board meetings if that is truly a feature we want to add. If you have an opinion, my email is below. For those of you that don’t know our website is www.redcedarlakes.com.

The second improvement will be just an overall higher level communication. This will be done via Facebook. The goal is to make multiple posts throughout the summer about various topics and hopefully spur activity from you as well via comments, sharing and emailing content that you’d like to see posted. If you have something you’d like to be shared on the page please email me at linder.j.ryan@gmail.com. I cannot guarantee all requests will be posted as they will be vetted prior to posting but hopefully most of them can be! Also, if you have Facebook and have not liked the page, please do so. Search Red Cedar Lakes Association.

Lindy’s Line:

The water is warming rapidly this year so keep that in mind as you go fishing. Fish do not have a calendar; all their activity is based upon water temperature.

As an example, crappies spawn when water temps are 55-65 degrees and will move in and out of those spawning areas depending on the temperature that day.



If it is sunny/warm they’ll be shallow if a cold front pushes through they will stage in deeper water.

When the water temp is right most crappies will be shallow in that 1-4 foot range. Look for areas which have soft-dark bottoms such as; bays, creeks, or pencil reed patches.

The temperature is still cold look for the prime habitat for crappies spawning (above) and one must locate the staging area. To find the staging area head straight out from the spawning area, and find the first initial drop-off to deeper water, this in most cases will be the staging area for those spawning crappies.

Good luck there and remember to keep the average sized fish and throw the bigger fish back, those are the best producing females. That will ensure a great fishery for years to come!

Ryan Linder
Communications Committee

Shoreline & Island Restoration Committee

A Healthy Lake is a Happy Lake!

All of us love our Red Cedar Chain of lakes. And we have good reason to do so. Water quality continues to improve thanks to a number of factors including the ongoing stewardship of our RCLA Association members and

volunteers. Our collective work, big and small, all serves to improve and maintain our healthy lakes.

Fortunately, the WI DNR has a robust Healthy Lakes program designed to assist carrying out one of our Association’s most important goals. The goal of maintaining and enhancing lake quality.

The Healthy Lakes grant program is designed to help “fund increased installation of select best management practices (BMPs) on waterfront properties without the burden of developing a complex lake management plan.” Some fancy words meaning that the DNR is willing to invest in our collective efforts to keep our lakes clean and healthy.



So how does this grant program work?

The Healthy Lakes program is designed to provide grants to fund shovel-ready projects that are relatively inexpensive and straight-forward. Healthy Lakes grants are not intended for large, complex projects, particularly those that may require engineering design. Rather, Healthy Lake grants are there to fund small, but nonetheless important, individual stewardship projects on privately-held lakeshore property.

A Healthy Lakes website answers the question “What’s in it for you?” as follows:

“If you own lakeshore property, you will be able to directly control the availability and integrity of fish and wildlife habitat in and along your lakeshore and redirect, capture, and clean the runoff water that may otherwise enter the lake. Furthermore, you can eliminate or prevent erosion that harms your private property and the public resource (i.e. lake).”

...

Implementing the suggested best practices over time may eventually add up to significant success and healthier lakes for current and future generations.

So what are the “best practices” that can be funded with grants covering 75% of the cost that in turn will enhance our lakes as well as your shoreline property?



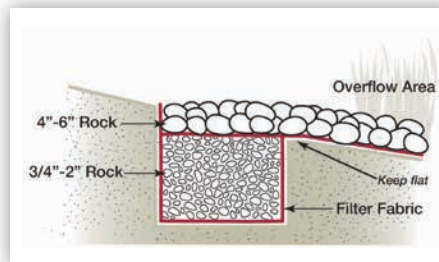
• *Native plantings including grasses and wildflowers with shrubs and trees. Plantings based on your property and interests – from bird/butterfly habitat to a low-growing garden showcasing your lake view.*



• *Rain gardens that multi-task by improving habitat while filtering runoff and providing a naturally beautiful view.*



• *Diversion practices to move water to areas where it can soak into the ground instead flowing directly into our lakes unabated.*



• *Rock Infiltration practices that fit in nicely along roof drip lines of structure and along driveways will provide runoff with a mechanism to filter itself.*

What’s even better is the fact that several of these best practices can be combined on your property to further enhance the benefits to our lake quality. This year our Association is looking for lakeshore property owners willing to consider implementing some of these best practices on their property.

Our Association is here to work with you to design your project, and then complete and submit a Healthy Lake grant application through our Association.

All you have to do is to let us know you are interested! Once we hear from you, we will set up a meeting (even remotely) and go over the Program and answer your questions. If it makes sense for you, we will work with you to get your project included in our Association’s Healthy Lake grant application. If approved, work would begin in 2021. Interested? Contact Michael Klutho at mklutho2801@gmail.com. Successful “Healthy Lakes” projects will not only enhance your property, they will contribute to keeping our lakes healthy for years to come.

Michael Klutho
 Shoreline & Island Restoration Committee

Decontamination Station Frequently Asked Questions

1. What is decontamination?

a. It is the process of removing all aquatic plants and animals, including materials that may contain or transmit aquatic invasive species (AIS) beyond physical removal or other methods.

2. What is a decontamination station?

a. The station may consist of high temperature water (140 degrees or more) applied with a pressure washer by trained personnel or a recommended chemical solution applied with a low pressure sprayer, or other techniques or devices.

3. Why have a decontamination station?

a. Hand removal is effective at removing plants from watercraft equipment and removes small animals. Decontamination is another tool to help kill invasive species that are not visible or very difficult to see (zebra mussels and spiny water fleas).

4. Who owns a boat landing?

a. Boat landings can be owned by various entities, including a private citizen, township, state or federal government. Permission to install a decontamination station must be approved by the landing owner.

5. Who maintains the decontamination station?

a. Citizen members of a lake association or district change the solution to the recommended mix of 2 tablespoons bleach per gallon of water. They are trained to properly apply the solution to equipment.

6. What is the concentration of bleach?

a. Standard bleach is 52,500 ppm chlorine, while the bleach concentration being used here is ~500 ppm. Reported in percentage, regular strength household bleach is 5.25% sodium hypochlorite while this solution is 0.05% sodium hypochlorite.

7. Where should the decontamination station be installed?

a. It is recommended to be installed away from the launch area and where vehicles use an area for turn-around/back up. If there is a sloped launch, it is installed away from the slope, upward on land.

8. Are there runoff issues?

a. A fine mist of the bleach/water solution is applied using a hand-pump sprayer. The solution covers the boat and trailer and is thoroughly applied around its perimeter. It evaporates quickly and no runoff into the lake occurs. There is no harm to the lake once the boat/trailer goes into the water.

9. Will it kill grass?

a. The concentration of the bleach solution being used is low enough that it should not kill grass. A much stronger solution (1 cup bleach/gallon vs 2 tablespoons/gallon) is often used to clean vinyl siding on houses with no effect on nearby grass and landscaping.

10. I'm worried that this decontamination method will harm my boat/equipment.

a. There are no known cases of damage from properly using any decontamination method. As stated in #9 an even higher solution

is recommended to clean vinyl siding on a house. The WI DNR uses this solution on all of their boating equipment every day and tournament fishing boats have been sprayed down and have shown no harmful effects.

b. **Ranger Boats:** "At any rate—household bleach at full concentration is not going to harm the gel coat when used during washing and rinsed off."

c. **Tuffy Boats:** "The described bleach solution is 100% safe on all gelcoat applications."

11. I'm worried that the bleach/water solution in my live well will harm fish I keep in there.

a. Between the low initial concentration of the applied solution, the off-gassing of the chlorine while sitting, and then the dilution of any residual chlorine, the likelihood that fish would be impacted by the bleach is very low.

b. An alternative would be to use ice to keep fish fresh until you get home.

12. I don't think that this will make a difference.

a. The vast majority of invasions are human mediated and theoretically preventable. Each prevention action we take, reduces the probability of a new invasion by a boat moving aquatic invasive species.

b. Recreational boating is a way AIS move around and once they are here, we all share a responsibility to be doing everything we can to prevent their spread.

13. What are people doing about other pathways? That's a big reason AIS moves around.

a. Ballast water – Recently approved regulations will facilitate the placement of ballast water treatment technology on ocean going shipping vessels.

b. Ducks and turtles – If ducks and turtles were moving AIS, we'd expect a much more random distribution. More small ponds and lakes without access would contain AIS.

As it stands, lakes that have boat ramps have AIS, indicating they are much more likely to be moved by people with boats than ducks and turtles.

c. People letting pets go-The national Habitattitude campaign promotes responsible pet ownership and outlines alternatives to pet release. Wisconsin uses this program to develop pet rehoming networks so that people have alternatives to pet release.

As of February 2018, Washburn and Burnett Counties have passed an ordinance that states "if a decontamination station is available at a boat landing, the boater is required to use it".

For more information contact:

Burnett County AIS Coordinator, Tom Boisvert
at (715)-349-2109 Ext. 1382

Washburn County AIS Coordinator, Lisa Burns at (715)-468-4654



BALSAM, RED CEDAR, HEMLOCK,
BASS & MUD LAKES
Preserve and Protect for the Future.

P.O.Box 214
Birchwood, WI 54817
Address Services Requested

Non-Profit Org.
U.S Postage
PAID
Eau Claire, WI
Permit #1557

In This Issue:

**President's Letter • Vice President's Letter
Aquatic Invasive Species Committee • Lake Information & Safety Committee
Fish Habitat Committee • Coupon Book Committee • Nature Committee • Communications Committee
Shoreline & Island Restoration Committee • Decontamination Station FAQ**

Water Quality Committee

Spring is finally here, the ice is melted, and that means it is time for the Water Quality Committee to get back onto and into the water, sampling our lakes and streams. We monitor them monthly collecting information on dissolved oxygen, water clarity, stream flow, and dissolved phosphorus. This year, we add maintaining proper social distancing to our research techniques. Water quality matters, whether you want to swim, fish, ski, watch wildlife, or just like see the lakes as you drive by.

Our data show two important results. First, our efforts are paying off. The Red Cedar chain of streams and lakes is getting measurably cleaner because of the united efforts of those of us who live or visit the watershed. We practice measures like shore line protection, keeping septic tanks functioning, and fighting invasive aquatic plants and animals. However, our data also show how much we dependent we are on our neighbors' actions as well as our own. To a lake or a stream, we are all neighbors. What I

do on Balsam Lake affects Red Cedar. Hitchhiking invasives at any boat landing can affect all of us. Monitoring our lakes shows us that the efforts pay off. However, we are not done. There are lots of things you can do, and your Association is here to help. If you would like more information on water quality, let me know.



Tim Lewis
Water Quality Committee



**Check us out
on Facebook @**

www.Facebook.com/redcedarlakesassociation